

5" Rear Block Kit

Dodge Ram 3500 4WD | 2019

Part #: 012526, 012527

Rev. 032320



491 W. Garfield Ave., Coldwater, MI 49036 • Phone: 517-279-2135

Web: www.bds-suspension.com • E-mail: tech-bds@ridefox.com

SAFETY WARNING

BDS Suspension Co. recommends this system be installed by a professional technician. In addition to these instructions, professional knowledge of disassembly/ reassembly procedures and post installation checks must be known.

Box Kit 012526 or 012527		
Part #	Qty	Description
03897	1	5" Block, Flat, 1/2" offset, Wing - DRV
03898	1	5" Block, Flat, 1/2" offset, Wing - PASS
964381612RB or 964381912RB	4	9/16" x 4-3/8" x 16-1/2" Round U-Bolt
	4	9/16" x 4-3/8" x 19-1/2" Round U-Bolt
N96FH	8	9/16" Fine High Nut
W96S	8	9/16" SAE Flatwasher
01599	2	Center Pin
354	1	Bolt Pack
	2	3/8"-16 x 1-1/4" Bolt, Yellow Zinc
	4	3/8" Washer, Yellow Zinc
	2	3/8"-16 Prevailing Torque Nut, Yellow Zinc

Rear Shocks		
Part #	Qty	Description
85761	2	Rear NX2 Shocks
or		
98224761	2	Rear Fox 2.0

INSTALLATION INSTRUCTIONS

1. Disconnect e-brake cable and reroute the line to give adequate slack in the cable at full droop, reattach once routed for extra slack. (Fig. 1, 2)

FIGURE 1

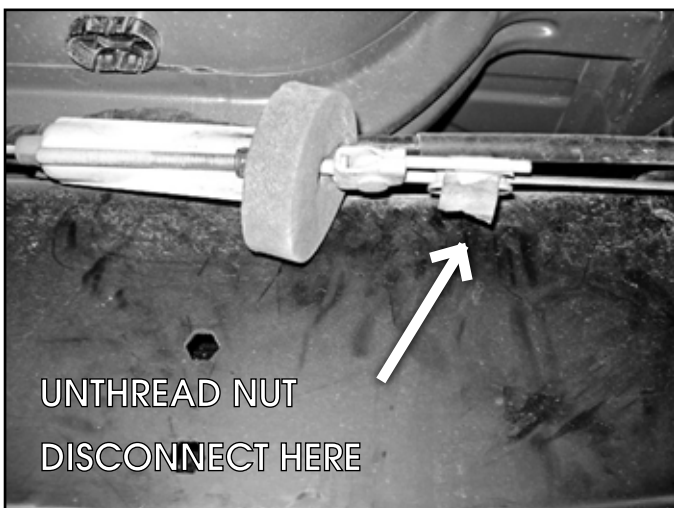


FIGURE 2



2. Remove the factory rear brake line bracket from the differential cover. (Fig 3)

FIGURE 3



3. Remove the factory shocks, retain all mounting hardware.
4. Support the rear axle with a hydraulic jack. Remove the u-bolts and plates from one side of the vehicle only. Loosen the u-bolts on the opposite side slightly, but do not remove.
5. Remove the middle plastic center pin from the leaf pack and install the new press-in steel center pin provided. (Fig 4, 5)

FIGURE 4



FIGURE 5



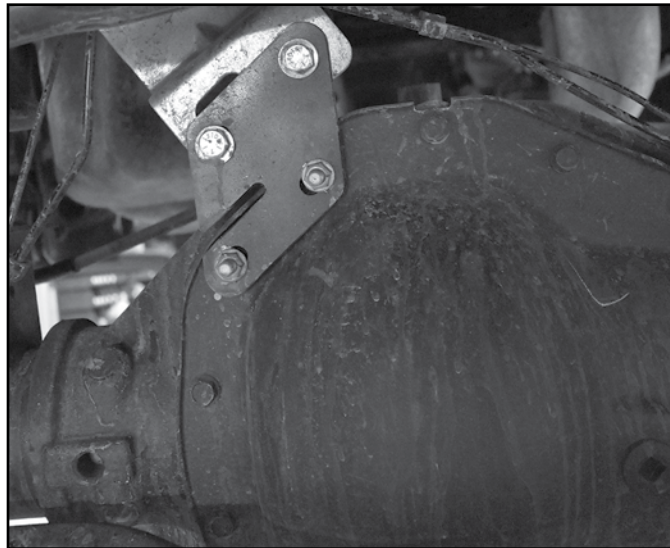
6. Place the new block on the spring perch off-setting the axle forward. Align the pin in the axle perch hole. The Wing on the block will be towards the center of the vehicle for the bump stop.
7. Raise the axle to the spring while aligning the center spring pin to the hole in the block.
8. Install the new u-bolts and snug the assembly together. Final u-bolt torque should be done with the weight of the vehicle on the springs.
9. Repeat the procedure on the driver's side.
10. Grease bushings and sleeves, install them into both ends of the shocks with factory hardware. Tighten to 60 ft-lbs. If installing optional Fox Shocks, the body will be located at the frame mount..



Tip *Rear shock numbers are Fox98224761 or 15249*

11. Mount the supplied rear brake line bracket to the rear diff with factory hardware. Torque to 12 ft-lbs. Using the 3/8" hardware supplied in bolt pack 354 mount the factory bracket to the supplied bracket, torque to 26 ft-lbs. (Fig 6)

FIGURE 6



12. Reinstall wheels, torque to specification.
13. Lower the vehicle to the ground.
14. Torque the u-bolts to 100-120 ft-lbs.
15. Check all hardware for proper torque.
16. Check hardware after 500 miles.



WE WANT TO SEE YOUR RIDE!

Grab photos of your BDS-equipped truck in action and send them in for a chance to be featured. Send it in to our Bad Ass Rides customer gallery at bds-suspension.com/bar and post them on the BDS Fan Page on Facebook at facebook.com/BDSSuspensions. Don't forget about your BDS swag! BDS offers t-shirts, hoodies, decals and more available on the BDS website or through your local BDS distributor.

TIME TO HAVE SOME FUN

Thank you for choosing BDS Suspension.

For questions, technical support and warranty issues relating to this BDS Suspension product, please contact your distributor/installer before contacting BDS Suspension directly.