



RANCH HAND
PROTECT YOUR TRUCK

1-800-366-9712

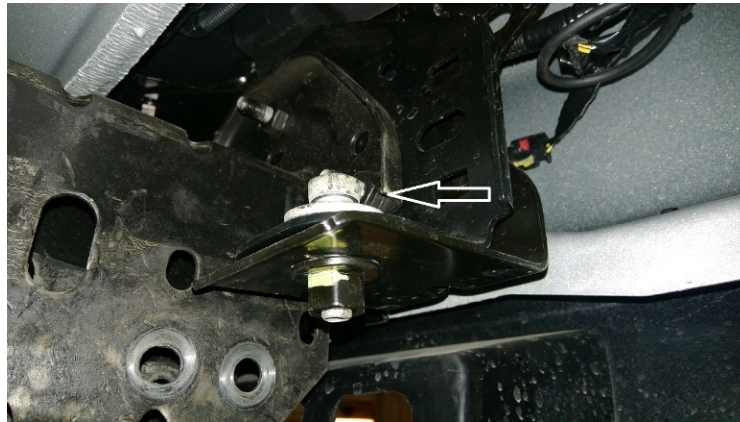
INSTALLATION INSTRUCTIONS

**2019 - 2021 GMC 1500 GRILLE GUARD
PART # GGG19HBL1 / GGG19HBL1C (Camera Cut)**

***** FOR VEHICLES WITH SENSORS, YOU WILL NEED TO USE PSG19HBL1 *****

***** TRUCKS WITH DIESEL MOTOR WILL HAVE TO CUT THE DRIVER SIDE TOW HOOK BOLT OFF *****

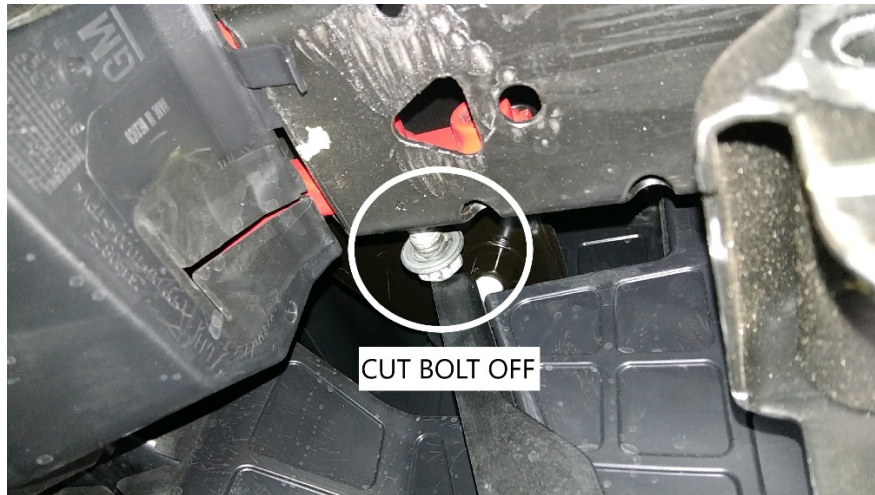
1. On models with tow hooks, loosen the 18mm bumper bolt, driver side only. This bolt is in the way of the tow hook bolt.



2. (*Diesel*) Remove the bracket that attaches the air dam to the frame. Also, remove the rectangle tubing from the frame.



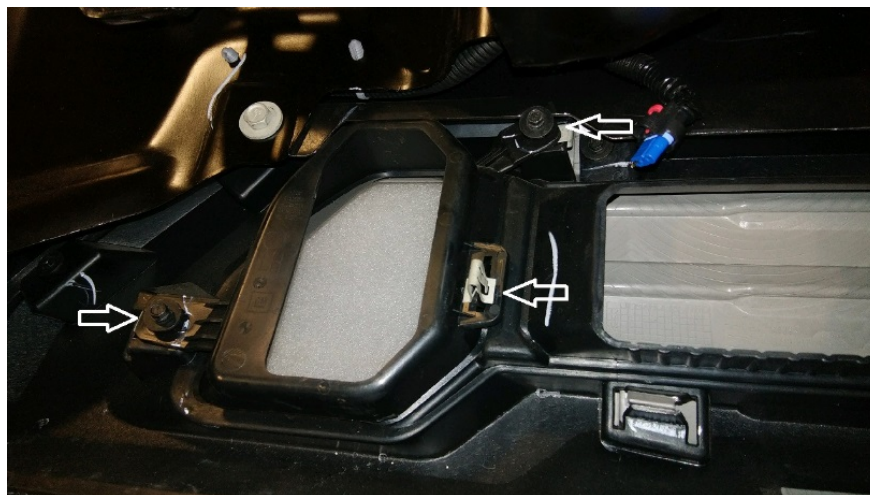
3. (*Diesel*) On the driver's side, cut the front tow hook's bolt off. You will use a ½" x 4" bolt to reinstall the tow hook later.



4. Remove the tow hook along with the plastic cover around it.



5. Also remove the tow hook trim panel. It is mounted by two 7mm screws and one clip.



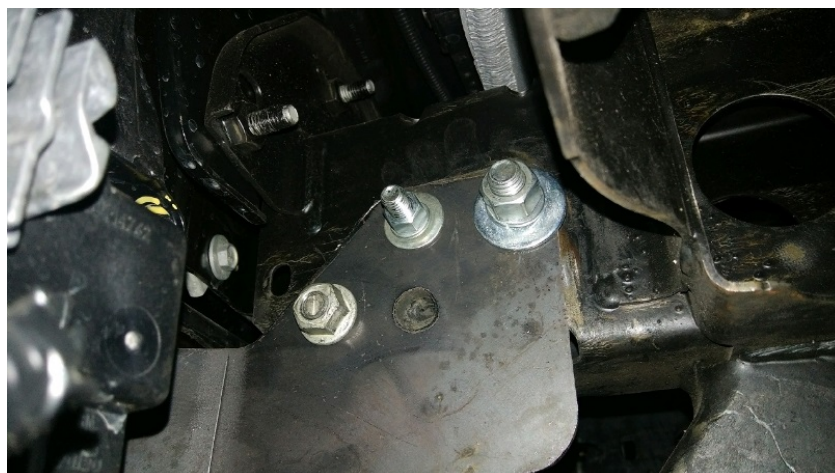
6. (*Diesel*) If sensors are present, remove sensors and sensor bracket. Install pigtailed and grommet from PSG19HBL1 at this time.
7. Slide the 5" tab w/the bolts through the top holes of the frame.



8. From the backside, slide the mounting bracket through the tow hook opening. Use 3/8" and 1/2" washers, lock washers, and nuts to install.



9. Reinstall the tow hooks. Use the factory tow hook bolts. (*Diesel*) Use 1/2" x 4" bolt. If there are no tow hooks present, use 1/2" bolts. Also, at this time tighten the 18mm bolt that was loosened in step 1.



10. Repeat steps on the passenger side. (*Diesel*) You will not need to cut tow hook bolt off.



11. Install the grille guard by using the ½" carriage bolts, washers, and lock nuts provided.
12. Level grille guard and tighten all bolts and nuts. You may have to loosen the mounting bracket bolts to help with leveling.
13. (*Diesel*) Reinstall rectangle tubing and bracket that was removed in step 2.

----- **WARNING** -----

Special care should be exercised in the handling, storage, and installation of Ranch Hand equipment. The actual weight of each piece of equipment will vary depending on the style and model. The weight of the equipment is sufficient in volume to warrant special care, assistance, and in some instances, the use of mechanical equipment during the transfer and installation of the equipment. Do not assume a position directly under the equipment during installation. Be sure the equipment has been connected and stabilized during installation to prevent falling or shifting of positions. Periodically check the tightness of bolts to make sure they are tight, and unlikely to fail.

Rev. 3/24/21