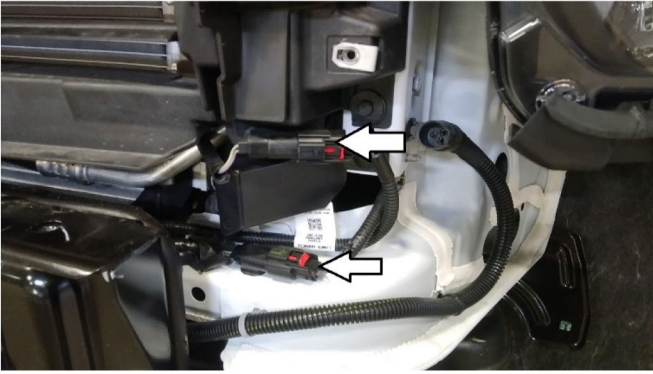
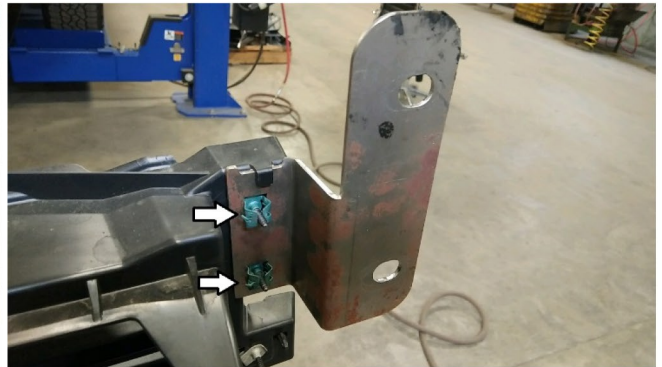


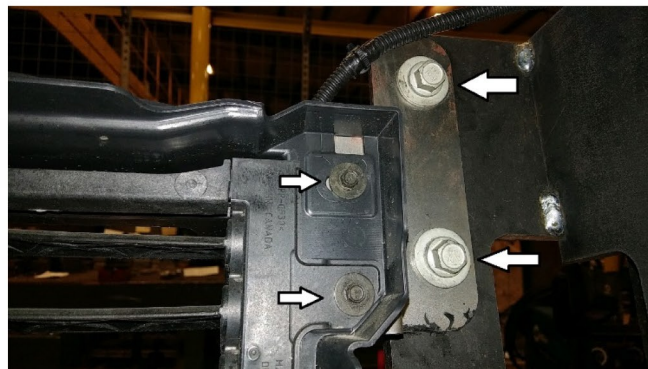
9. Unplug and remove the lower louvered air duct panel.



10. Pop out the clips and insert them in the provided brackets.



11. Remove the two black bumper mounting plate by removing the (4) 15mm bolts. The bolts will be used to install the Ranch Hand Frontend.
12. Mount the frontend to the frame by reusing the 15mm factory bolts. Level the frontend and then tighten bolts.
13. Mount the bottom brackets to the tow hook holes. Remove the tow hook bolts and use the 5" x 1/2" bolts to install. Use the 1/2" black carriage bolts to mount the frontend to the bottom brackets. (Note: The extra black carriage bolts and hardware are for installing fog light brackets.)
14. Mount the license plate using 1/4" bolts to the bottom grille insert.
15. Mount the louvered air duct and brackets to the inside bolts of the replacement bumper.



16. Hook up the sensor and fog light wires. Use the rubber grommets to install the sensors. You can run the wires through the square opening in the mounting brackets just below the top plate. Adjust the lights and sensors if needed.
17. Install the fog lights using brackets